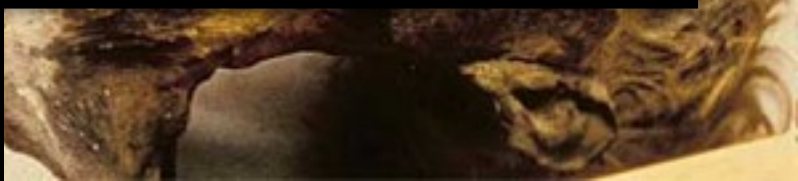
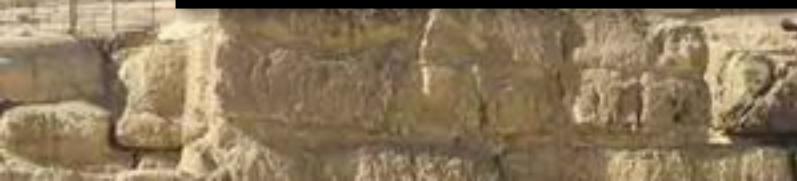


Maths Jam













An inventory of a household

1	2801	7	
2		Houses	
5602		49	Cats
4	11204	343	Mice
Total	19607	2401	Emmer

Surface Area of a Hemisphere

$$d \left[\left(2d - \frac{2d}{9} \right) \frac{1}{9} - \frac{1}{9} \left(2d - \frac{2d}{9} \right) \right]$$

Surface Area of a Hemisphere

$$d \left[\left(2d - \frac{2d}{9} \right) \frac{1}{9} - \frac{1}{9} \left(2d - \frac{2d}{9} \right) \right]$$

Area of a Circle

$$\left(\frac{8}{9} d \right)^2$$