

The image features a black background with several abstract elements. A large, thin white circle is centered, with a thick light green ring following its path. To the left, a white zigzag line is partially visible. In the top right, there is a light orange ring. In the bottom right, a large light orange semi-circle is present. To the right of the main circle, there are five parallel white diagonal lines. In the bottom left, a small light orange circle is visible.

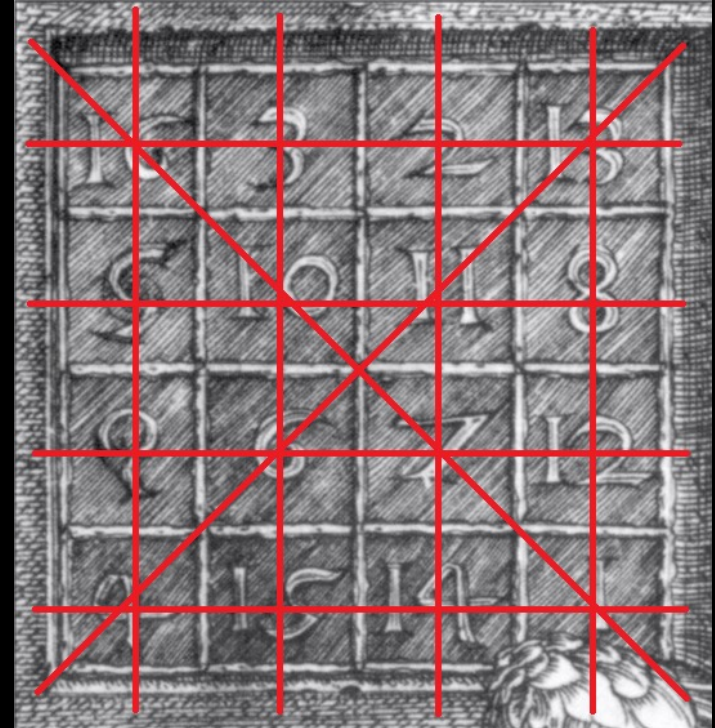
Nightking



Magic Squares

Full magic

Numbers from 1 to n^2



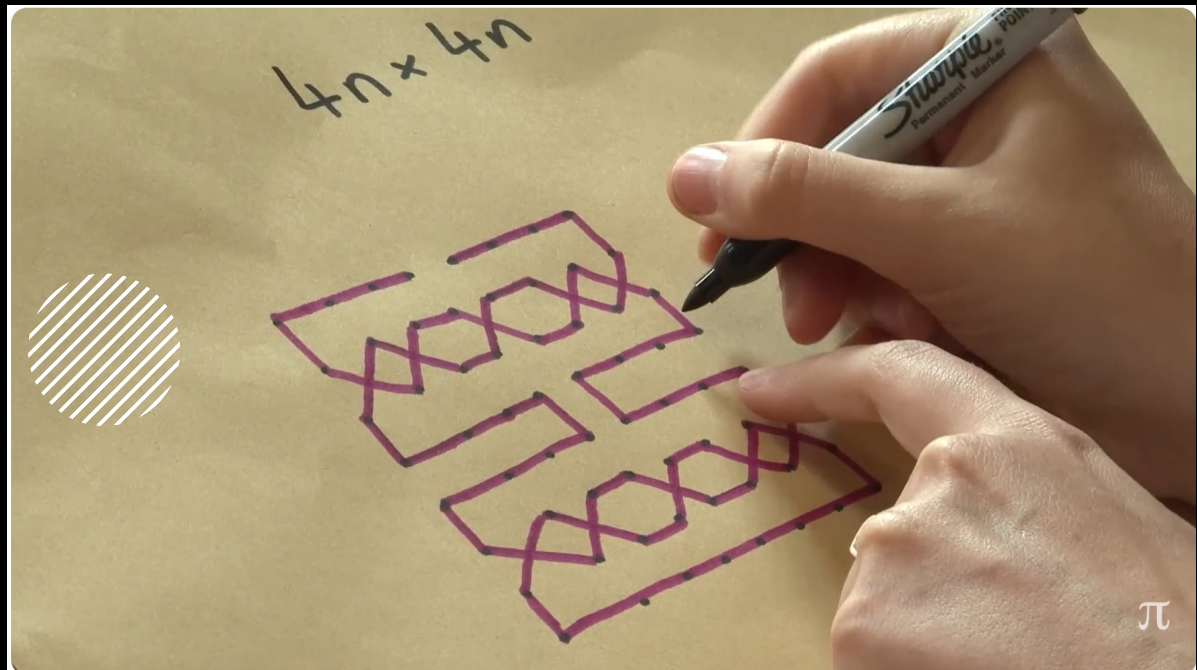


Knight's Tours



1	48	31	50	33	16	63	18
30	51	46	3	62	19	14	35
47	2	49	32	15	34	17	64
52	29	4	45	20	61	36	13
5	44	25	56	9	40	21	60
28	53	8	41	24	57	12	37
43	6	55	26	39	10	59	22
54	27	42	7	58	23	38	11

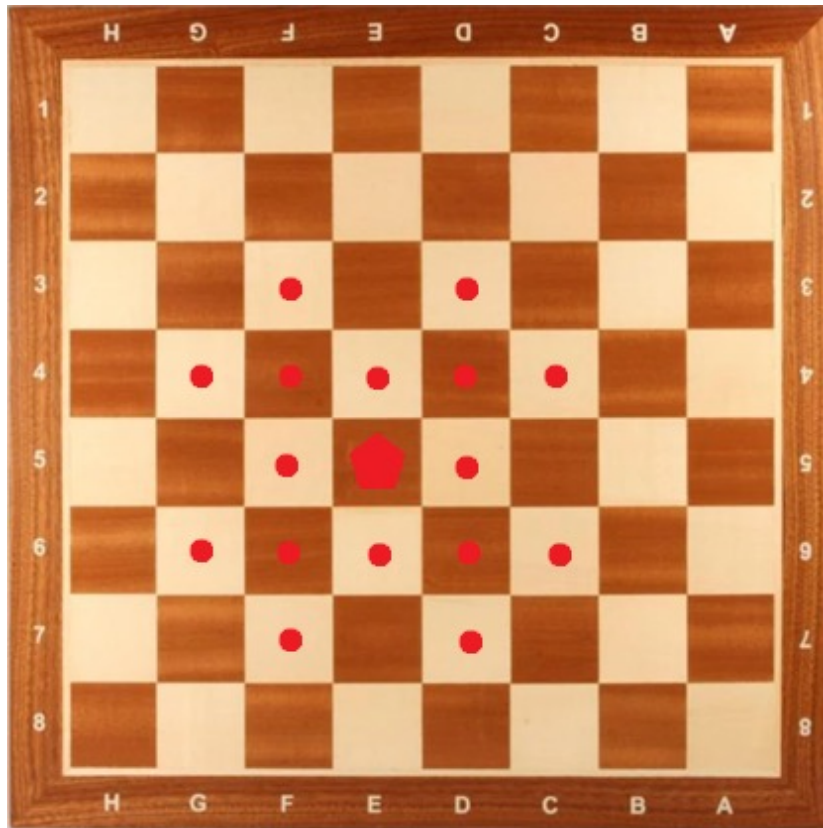
King's Tours



(© numberphile)

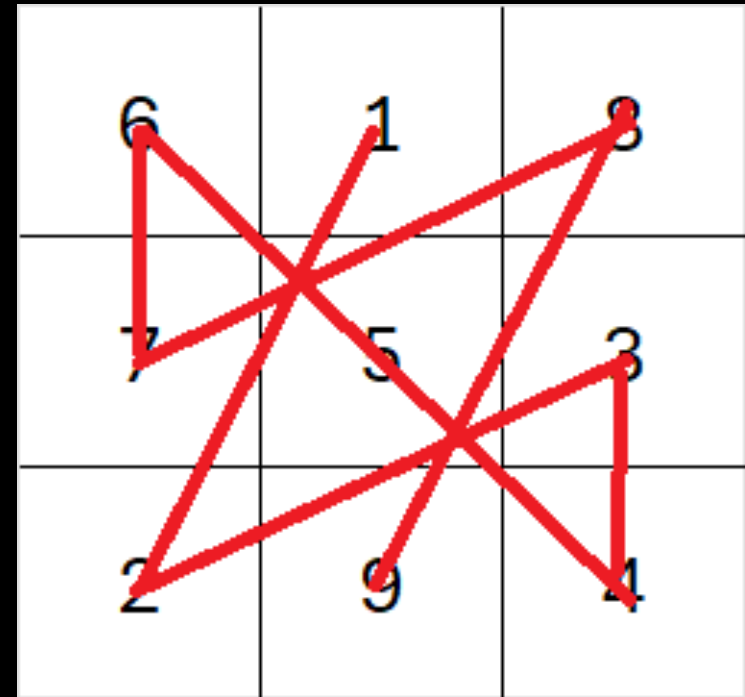


The Nightking



3x3

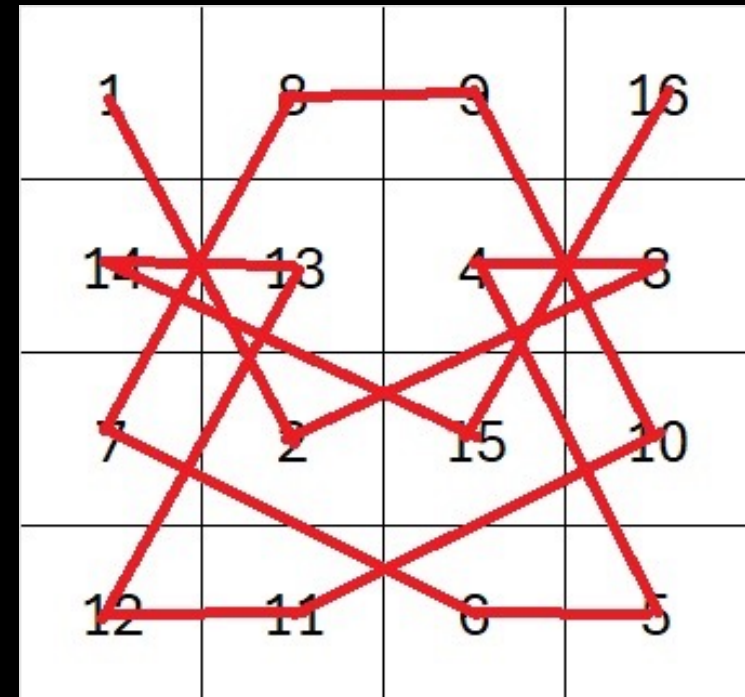
- 1 magic nightking's tour (not closed)
- 0 magic king's tour
- 0 (magic) knight's tour





4x4

- 1 magic nightking's tour (not closed)
- 0 magic king's tour
- 0 (magic) knight's tour



5x5

0 magic knight's tour





6x6 and 7x7

No magic king's* or knight's tours

(* as far as the internet knows about it).

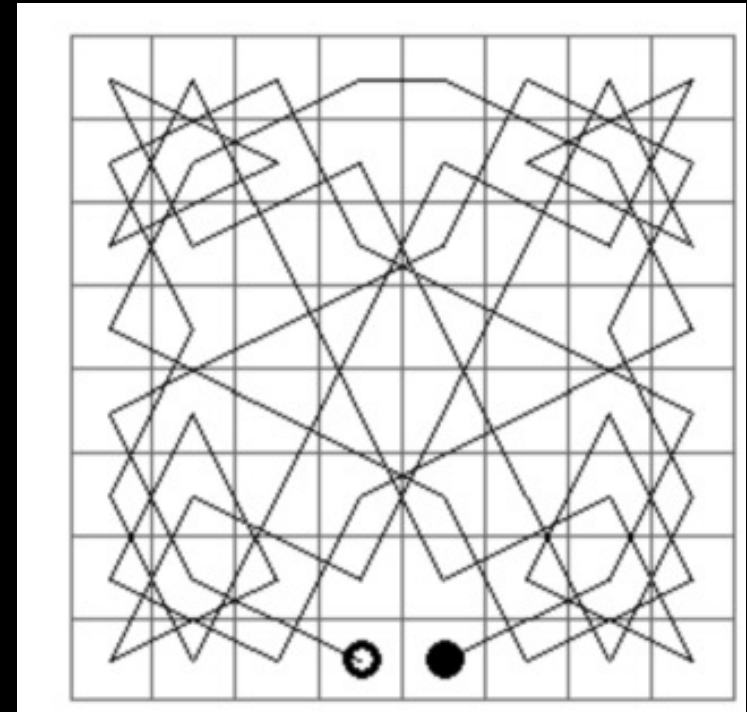




8x8

36 Magic knight's tours with 1 king's
move in the middle

(closed: 12)



(reference: Yann Denef)



